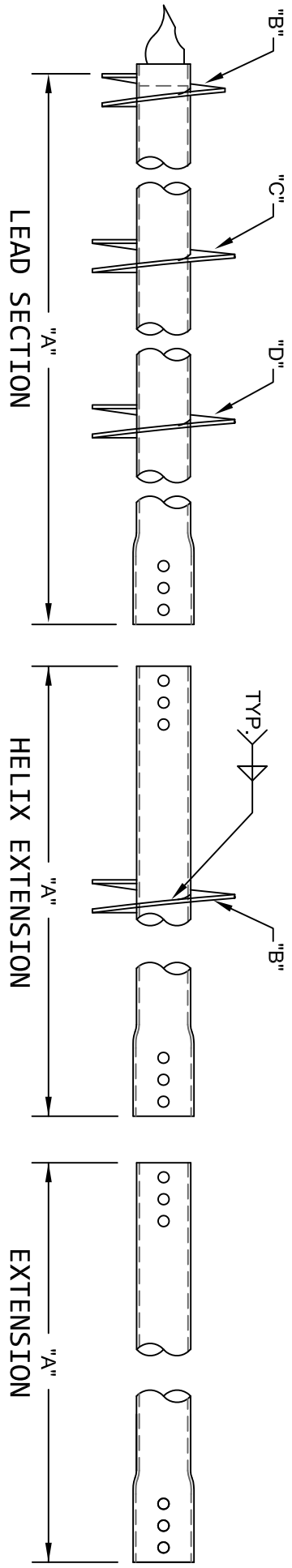


HSS 5.563" Ø HELICAL PILES AND ANCHORS - EXTERNAL CONNECTION



CAT. #	"A"	"B"	"C"	"D"
8825	2'-0"	10"		
8832	5'-0"	10"	12"	
8833	5'-0"	12"	14"	
8845	7'-0"	8"	10"	12"
8846	7'-0"	10"	12"	
RD.1200	7'-0"	10"	12"	12"
8847	7'-0"	10"	12"	14"
8848	7'-0"	12"	14"	
8849	7'-0"	14"	16"	
8866	10'-0"	12"	14"	16"

* MULTI-HELIX ARE SPACED 3 DIAMETERS OF THE LOWER HELIX.

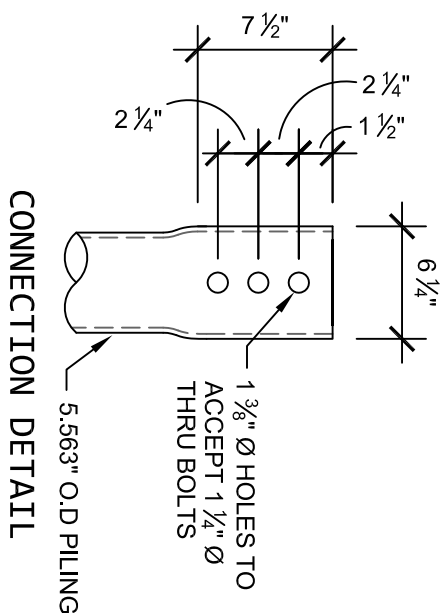
CAT #	"A"	"B"
8805-12	5'-0"	12"
8807-12	7'-0"	12"
8807-14	7'-0"	14"

CAT #	"A"
8805	5'-0"
8807	7'-0"
8810	10'-0"
8812	12'-0"

MECHANICAL TORQUE RATING - 30,000 FT-LB
 ULTIMATE CAPACITY (COMPRESSION) - 150.0 KIP *
 ALLOWABLE CAPACITY (COMPRESSION) - 75.0 KIP *
 *BASED ON A TORQUE FACTOR (Kt) = 5
 ULTIMATE CAPACITY (TENSION) - 120.0 KIP **
 ALLOWABLE CAPACITY (TENSION) - 60.0 KIP **
 **BASED ON A TORQUE FACTOR (Kt) = 4

NOTES:

- POLYETHYLENE POLYMER THERMOPLASTIC COATING PER ICC-ES AC 228.
- LEAD AND EXTENSION SECTION AND PILOT POINT LENGTHS ARE NOMINAL...
- SHAFT MATERIAL IS 5.563" O.D., 0.258" WALL, MINIMUM Fy=55 KSI AND Fu=70 KSI.
- HELIX BLADE MATERIAL IS HOT ROLLED, MINIMUM Fy=50 KSI AND Fu=80 KSI CARBON STEEL. PLATE THICKNESS ARE MINIMUM 1/2" THICK.
- NOMINAL SPACING BETWEEN HELICAL PLATES IS THREE TIMES THE DIAMETER OF THE LOWER HELIX.
- MANUFACTURER SHALL BE ISO 9001:2015 CERTIFIED.
- ALL WELDING IS TO BE DONE BY WELDERS CERTIFIED UNDER SECTION 5 OF THE AWS CODE D1.1.
- ALL COUPLING BOLTS TO BE 1" Ø, SAE J429 GRADE 8 BOLTS. (U.N.O. ON CONSTRUCTION DWGS.)



DWG. NO. : 2875.03	CATALOG NO. : SEE TABLES	REV. 1
SCALE : 3/4" = 1'-0"	DRAWN BY : DLW	DATE: 03/14/17
SHEET 1 OF 1		